



CAROLE FEUERMAN'S SERENE BATHER SCULPTURE SIGNALS SUMMER

Posted by [Editor](#) on Sunday, May 27, 2012 · [Leave a Comment](#)

NEW YORK—The debut of “[Survival of Serena](#),” [Carole A. Feuerman](#)'s new sculpture in Petrosino Square is a real harbinger of summer. Donning a fuchsia bathing cap, with her eyes closed just so and skin glistening with “water drops,” she is a vision of serenity—looking refreshed and relaxed after taking a cool dip. Known for her depictions of swimmers and bathers, Feuerman's bronze work amazes viewers who are impressed with its “hyper-realistic” qualities. Public art draws praise and criticism from aficionados and elicits curious comments from those who don't ordinarily experience art. Yesterday, one woman, a tourist who posed before the sculpture with her husband and two children, wondered what it was advertising and how “they” kept it looking wet.

Unveiled last weekend at the intersection of Lafayette Street and Cleveland Place (at the edges of Soho, NoLita and Little Italy), the sculpture will be on display, [courtesy of Jim Kempner Fine Art](#), through Sept. 23, 2012.

All photos by Arts Observer

THIS WEEK'S OBSERVATIONS

[Carole Feuerman's Serene Bather Sculpture Signals Summer](#)

[Ebityenyefa Baralaye Explores Issues of Identity](#)

[‘Still’: Jenny Saville's Portrait is a Study of Color and Flesh](#)

[Anish Kapoor Makes a Singular Statement with Steel](#)

[Anish Kapoor Stages a Mesmerizing Forest of Concrete](#)

[Nothing But Net: Ernesto Neto Re-Envisions Crochet at Tanya Bonakdar Gallery](#)

[On the Met's Rooftop, a Walk Through the Clouds](#)

[Harmony & Discord: New Shepard Fairey Works at Pace Prints](#)

VIEW BY CATEGORY

[Antiques + Collectibles](#)

[Architecture + Urban Design](#)

[Art Galleries + Dealers](#)

[Auctions](#)

[Black Art](#)

[Fairs + Shows](#)

[Fashion + Style](#)

[Furniture + Interior Design](#)

[Murals + Street Art](#)

[Museums](#)

[Public Art](#)

[Retail + Restaurants](#)

VIEW BY MEDIUM

[Paintings, Prints + Drawings](#)

[Photography](#)

[Sculpture](#)

[Textiles](#)



"Survival of Serena," 2012 (painted bronze).



EXPLORE BY LOCATION

Baltimore

Brooklyn

Harlem

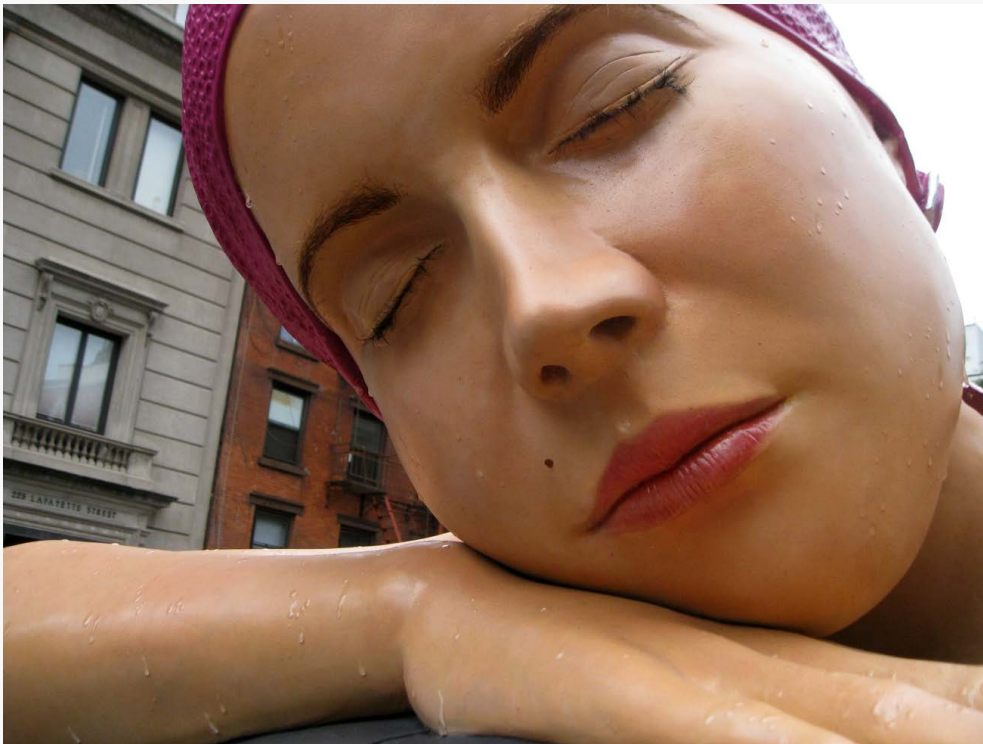
Maryland

New York

Philadelphia

Virginia

Washington D.C.





Installation view at the intersection of Lafayette Street and Cleveland Place.



[Tweet](#)

[Like](#)

Category: [Artists](#), [New](#), [New York](#), [Public Art](#), [Sculpture](#) · Tags: [Carole Feuerman](#), [Jim Kempner Fine Art](#), [Survival of Serena](#)

Leave A Comment

Name (required)

Mail (will not be published) (required)

Website

About AO

The Editor

Contact

Connect

[Follow @artsobserver](#)

Archives

View by Date

May 2012

M	T	W	T	F	S	S
	1	2	3	4	5	6

[7](#) [8](#) [9](#) [10](#) [11](#) [12](#) [13](#)
[14](#) [15](#) [16](#) [17](#) [18](#) [19](#) [20](#)
[21](#) [22](#) [23](#) [24](#) [25](#) [26](#) [27](#)
28 29 30 31

[« Apr](#)

Copyright © 2011-2012 Arts Observer · [RSS Feed](#) · [Log in](#)
The Structure Theme v3 by Organic Themes · [WordPress Hosting](#)

